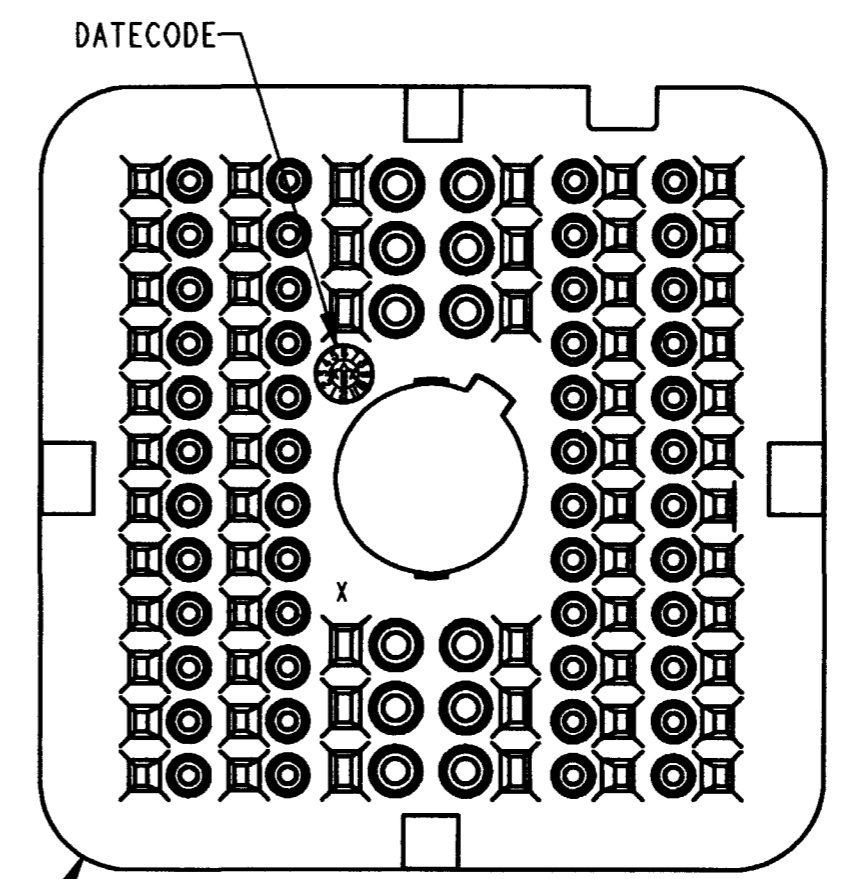
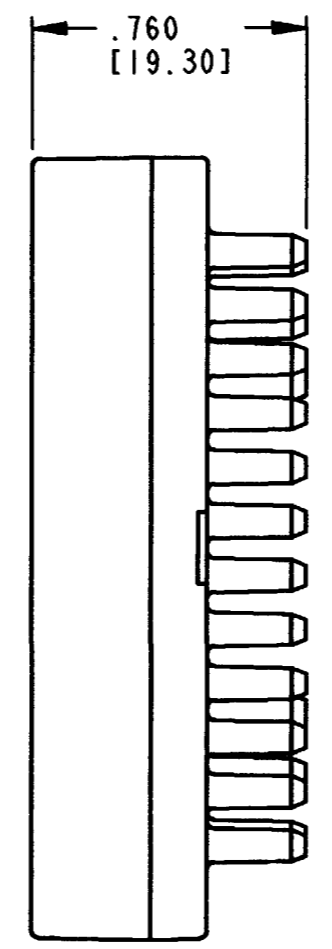
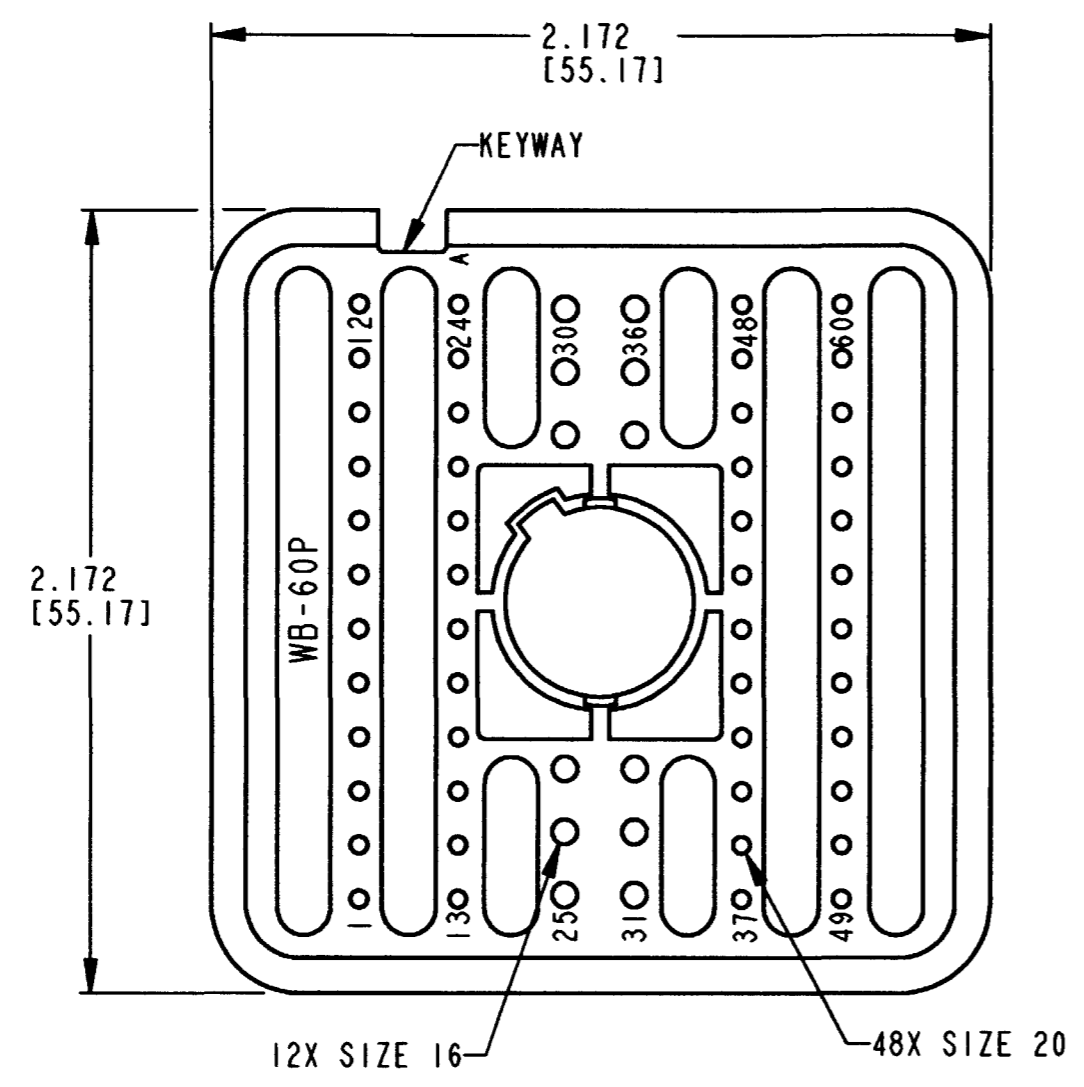


REV  
A

**WB-60P\***

REVISIONS

SYM	DESCRIPTION	DATE	APPROVED
NC	NEW RELEASE PER E.O. P17208	4-5-01	R.D.R.
A	REVISED PER E.O. P18606	6-14-04	RDR



- NOTES:
1. DIMENSIONS ARE IN INCHES [mm].
  2. DIMENSION TOLERANCE:  $\pm .025$  [.64].
  3. THIS WEDGE LOCK MATES WITH DRB12-60P\*(N)E-\*\*\*\* RECEPTACLE (\* = A,B,C,D KEYS; \*\*\*\* = ALL MODIFICATIONS). CONSULT FACTORY FOR MODS.
  4. MATERIAL: PLASTIC
  5. SEE SHEET 2 FOR OTHER KEY ARRANGEMENTS.

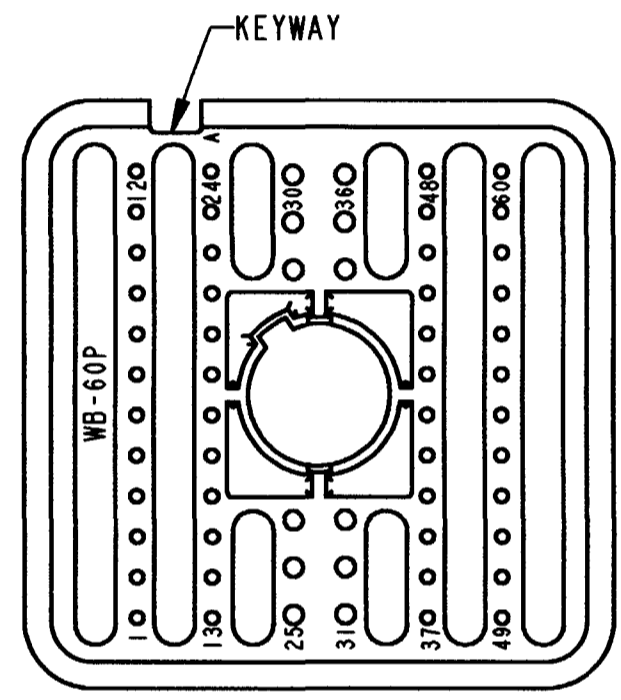
SIGNATURE & DATE	
DR	S. PALLUTH 04/02/01
CHK	[Signature] 5/11/04
PE	[Signature] 6/10/04
APPD	R. Ried 6-14-04
SCALE	NONE WT

WEDGE LOCK, RECEPTACLE  
60 CONTACTS  
KEYS A,B,C & D  
DRB SERIES  
  
ENVELOPE

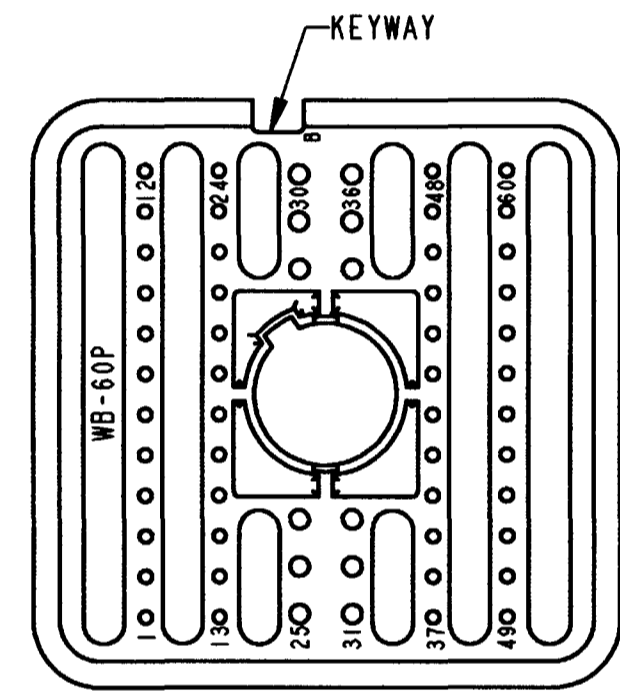
CP	EP059	MATL. CODE
<b>The Deutch Company</b> DEUTSCH I.P.D. 3850 INDUSTRIAL AVE. HEMET, CALIF. 92545		
<b>B</b>	<b>WB-60P*</b>	
DWG SIZE	CODE 11139	SHEET 1 OF 2

REV  
A **WB-60P\***

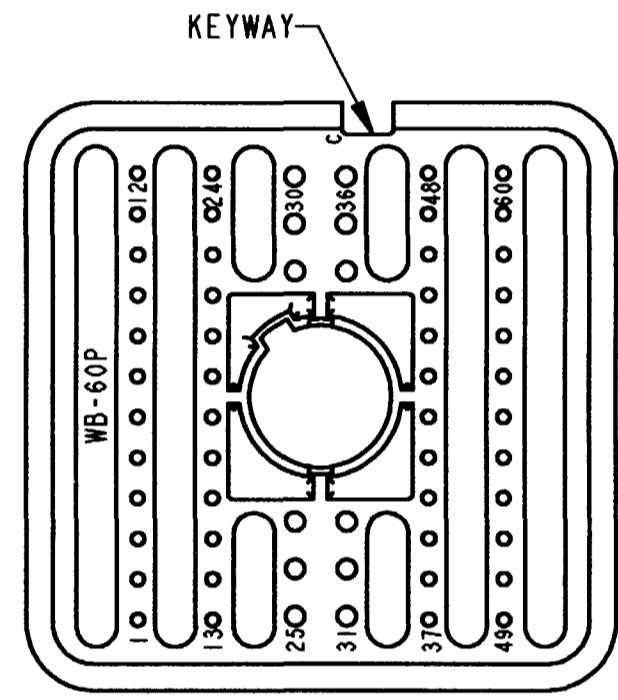
REVISIONS			
SYM	DESCRIPTION	DATE	APPROVED
	SEE SHEET 1	6-14-04	<i>POK</i>



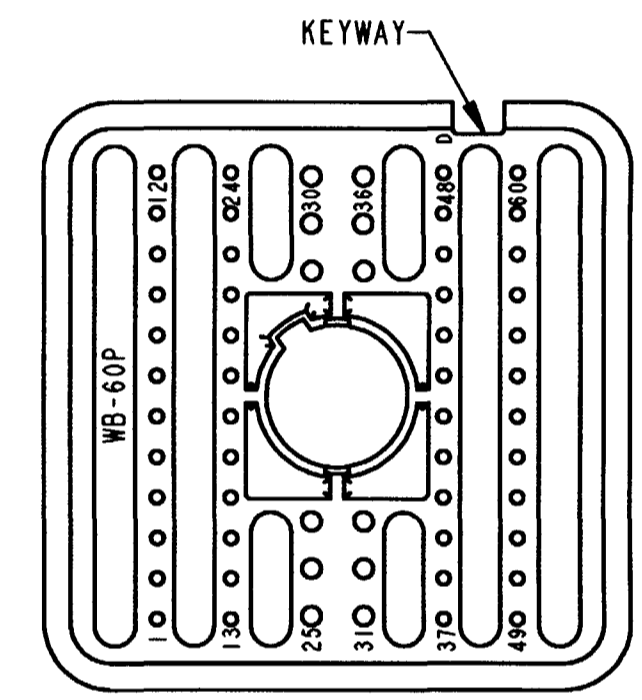
**WB-60PA**  
KEY ARRANGEMENT -A-  
COLOR: GREY



**WB-60PB**  
KEY ARRANGEMENT -B-  
COLOR: BLACK



**WB-60PC**  
KEY ARRANGEMENT -C-  
COLOR: GREEN



**WB-60PD**  
KEY ARRANGEMENT -D-  
COLOR: BROWN

NOTES:

SIGNATURE & DATE		WEDGE LOCK, RECEPTACLE 60 CONTACTS KEYS A, B, C & D DRB SERIES	CP EP059	MATL CODE	
DR	<i>S. PALLUTH 04/02/01</i>		<b>The Deutch Company</b> DEUTSCH I.P.D. 3850 INDUSTRIAL AVE. HEMET, CALIF. 92545		
CHK	<i>B. B. 6/11/04</i>		<b>B</b> <b>WB-60P*</b>	CODE	SHEET 2 OF 2
PE	<i>D. Meyer 6/10/04</i>			DWG SIZE	11139
APPD	<i>R. Reed 6-14-04</i>	ENVELOPE			
SCALE	NONE	WT			