

REVISIONS				
P	LTR	DESCRIPTION	DATE	APPV
A2		REVISED PER PCN-22-145811	11JUL2022	MR 1G
A3		REVISED PER PCN-22-153672	22SEP2022	AM 1G
A4		REVISED PER PCN-22-154549	04OCT2022	AM 1G
A5		REVISED PER PCN-23-190838	26OCT2023	AJ CB

FIGURE 1

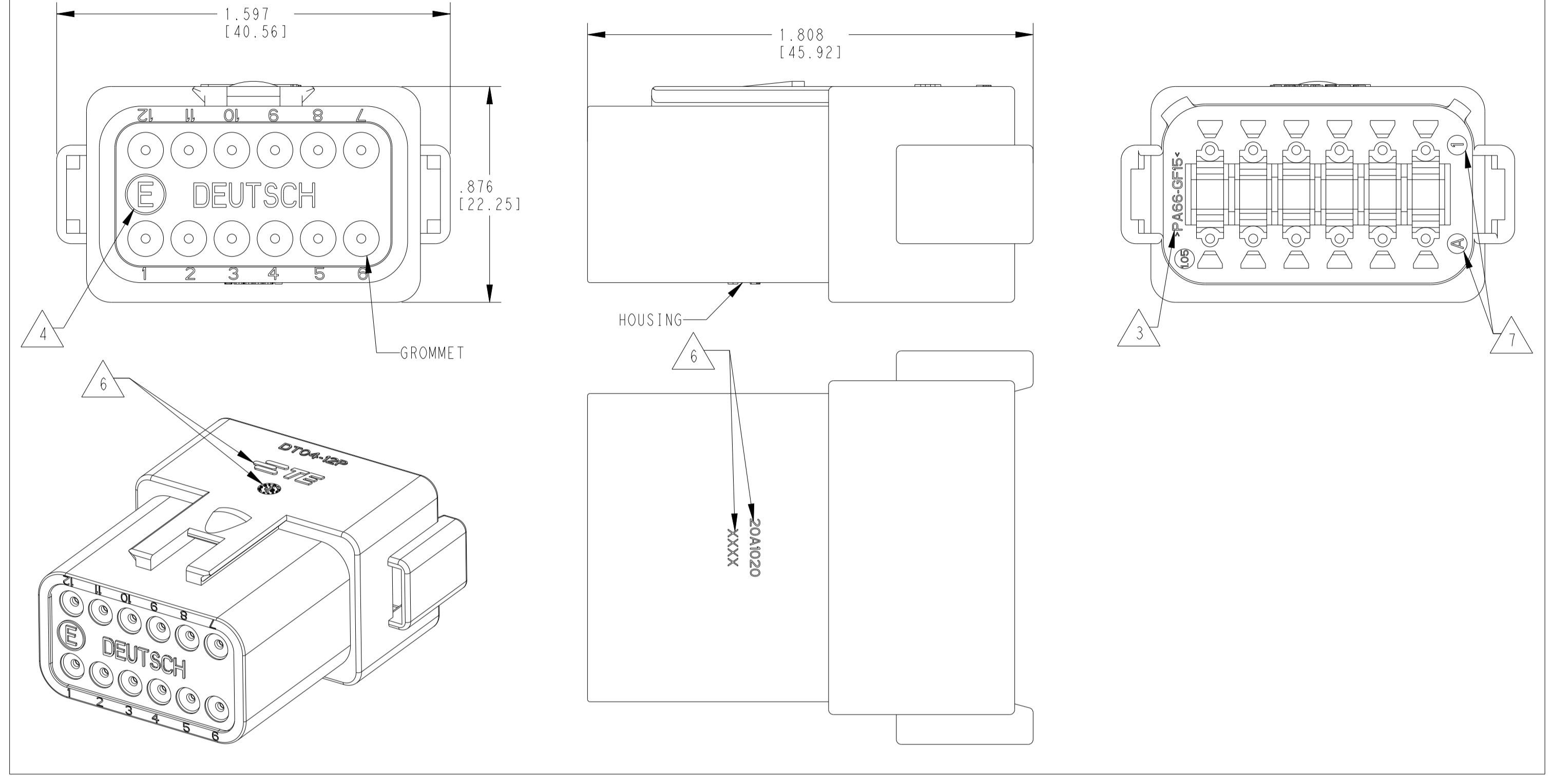


FIGURE 2 SHORT CAP

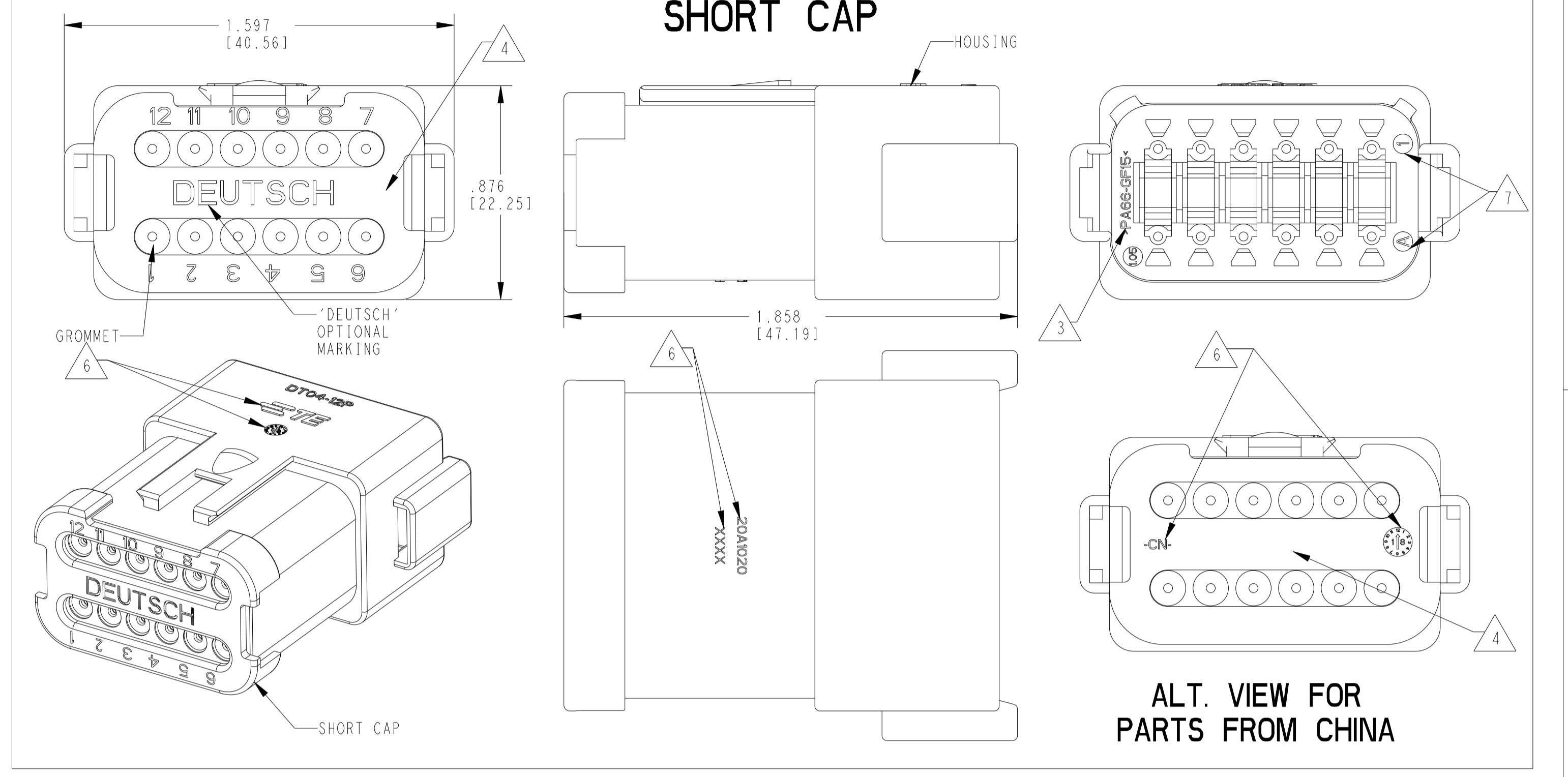
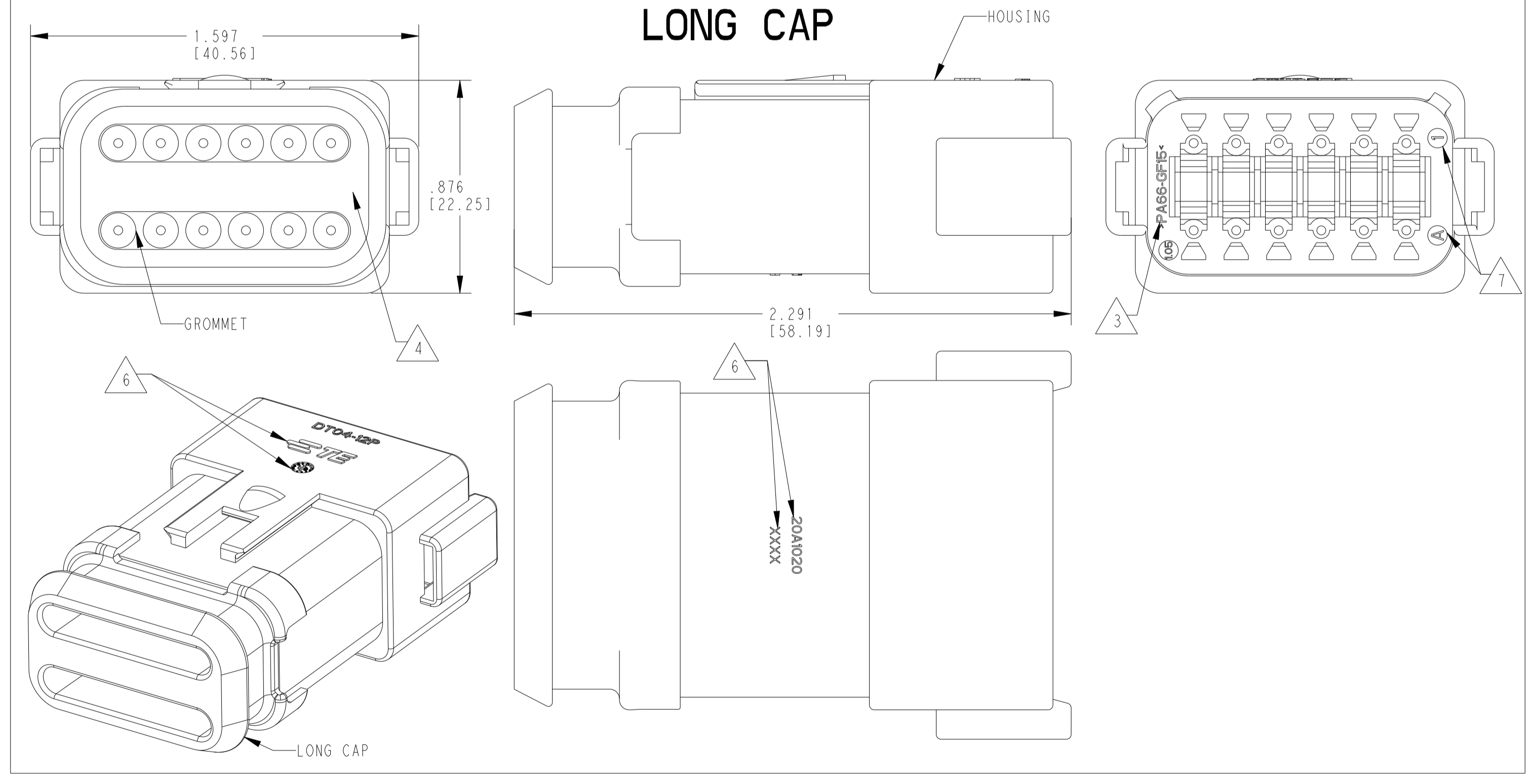


FIGURE 3 LONG CAP



CONTACT SIZE	WIRE RANGE	INSULATION OD SEALING RANGE	SEAL IDENTIFICATION
16	14-20 AWG [2.5-0.5mm ²]	.088-.145 [2.23-3.68] .053-.120 [1.35-3.05]	STANDARD SEAL EXTRA THIN SEAL E-SEAL

TE INTERNAL PART NUMBER	DEUTSCH PART NUMBER	PN REV	COLOR	STANDARD SEAL	EXTRA THIN SEAL E-SEAL	BLOCKED SEAL	ENHANCED KEY	SHORT CAP	LONG CAP	FIGURE
DT04-12PX	DT04-12PX	A	ALL	X						1
DT04-12PX-B016	DT04-12PX-B016	A	ALL	X			X			1
DT04-12PX-BE01	DT04-12PX-BE01	A	ALL	X			X	X		2
DT04-12PX-BE02	DT04-12PX-BE02	A	ALL	X			X	X		2
DT04-12PA-BE03	DT04-12PA-BE03	A	BLACK	X			X	X		2
DT04-12PA-BE04	DT04-12PA-BE04	B	BLACK		X		X	X		2
DT04-12PX-BE07	DT04-12PX-BE07	A	ALL		X		X		X	3
DT04-12PX-C015	DT04-12PX-C015	F	ALL		X					1
DT04-12PX-C017	DT04-12PX-C017	A	ALL			X		X		2
DT04-12PX-CE01	DT04-12PX-CE01	B	ALL		X			X		2
DT04-12PA-CE02	DT04-12PA-CE02	B	BLACK		X					1
DT04-12PA-CE03	DT04-12PA-CE03	B	BLACK		X			X		2
DT04-12PX-CE04	DT04-12PX-CE04	B	ALL		X				X	3
DT04-12PX-CE07	DT04-12PX-CE07	B	ALL		X		X	X		2
DT04-12PX-CE08	DT04-12PX-CE08	B	ALL		X		X			1
DT04-12PA-CE09	DT04-12PA-CE09	B	BLACK		X				X	3
DT04-12PA-CE26	DT04-12PA-CE26	A	BLACK			X		X		2
DT04-12PX-E003	DT04-12PX-E003	B	ALL	X				X		2
DT04-12PA-E004	DT04-12PA-E004	A	BLACK	X						1
DT04-12PA-E005	DT04-12PA-E005	A	BLACK	X				X		2
DT04-12PA-E008	DT04-12PA-E008	A	GRAY	X					X	3
DT04-12PX-EP04	DT04-12PX-EP04	C	ALL	X				X		2
DT04-12PA-EP20	DT04-12PA-EP20	A	GRAY	X			X	X		3
DT04-12PX-P004	DT04-12PX-P004	B	ALL	X						1

ALT. VIEW FOR PARTS FROM US

6. MARKING FOR PARTS PRODUCED IN CHINA:

-XXXX IDENTIFIES THE MODIFICATION NUMBER, IF APPLICABLE. EXAMPLE: "E003" FOR DT04-12PA-E003, OR BLANK FOR DT04-12PA
 -DATE CODE: IDENTIFIES THE YEAR, MONTH, DAY AND HOUR OF ASSEMBLY.
 YEAR: FIRST AND SECOND DIGIT. (17 = 2017)
 MONTH: THIRD DIGIT, EXCLUDING 1. A = JAN, B = FEB, C = MARCH ... (K = OCTOBER)
 DAY: FOURTH AND FIFTH DIGITS (14 = 14th DAY)
 HOUR: SIXTH AND SEVENTH DIGITS (11 = 11AM)
 -DIAL DATE CODE LOCATED ON HOUSING AND/OR CAP.
 -CN LOCATED ON HOUSING AND/OR CAP.

7. MARKING FOR PARTS PRODUCED IN US:
 -DATE CODE:
 YEAR TO BE LAST NUMERICAL DIGIT, EX: 1 = 2021
 MONTH USES SEQUENTIAL ALPHA CHARACTERS, EX: A = JANUARY
 -DEUTSCH

4. "E" IDENTIFIES E-SEAL, LOCATED APPROX. AS SHOWN.
 3. MATERIAL: HOUSING: PA66 GF15, SEE TABLE FOR COLOR
 SHORT, LONG CAP: PA66 GF15, SEE TABLE FOR COLOR
 GROMMET: E-SEAL VMO (BURNT RED)
 N-SEAL VMO (RED-ORANGE)
 BLOCKED VMO (RED-ORANGE)
 2. THIS RECEPTACLE MATES WITH DT06-12SX-XXXX PLUG (XXXX = ALL MODIFICATIONS)
 1. SECONDARY WEDGE LOCK SOLD SEPARATELY: W12PX-XXXX. (X = A,B,C,D KEY, XXXX = ALL MODIFICATIONS)

NOTES: UNLESS OTHERWISE SPECIFIED

THIS DRAWING IS A CONTROLLED DOCUMENT.

DIMENSIONS: IN [mm]	TOLERANCES UNLESS OTHERWISE SPECIFIED:	OWN: A. POLO 22DEC2021	CHK: R. MESSENGER 22DEC2021	APVD: J. GRANICHAROVA 22DEC2021
0 PLC ±	0.025 (0.001)	PRODUCT SPEC	108-151009	APPLICATION SPEC
1 PLC ±	0.050 (0.002)	SIZE	114-151009	WEIGHT
2 PLC ±	0.100 (0.004)	SCALE	5:2	SHEET 1 OF 3
3 PLC ±	0.200 (0.008)	CUSTOMER DRAWING	SCALE	5:2
4 PLC ±	0.400 (0.016)	RESTRICTED TO	REV	A5
5 PLC ±	0.800 (0.032)			
6 PLC ±	1.600 (0.064)			
7 PLC ±	3.200 (0.128)			
8 PLC ±	6.400 (0.256)			
9 PLC ±	12.800 (0.512)			
10 PLC ±	25.600 (1.024)			
11 PLC ±	51.200 (2.048)			
12 PLC ±	102.400 (4.096)			
13 PLC ±	204.800 (8.192)			
14 PLC ±	409.600 (16.384)			
15 PLC ±	819.200 (32.768)			
16 PLC ±	1638.400 (65.536)			
17 PLC ±	3276.800 (131.072)			
18 PLC ±	6553.600 (262.144)			
19 PLC ±	13107.200 (524.288)			
20 PLC ±	26214.400 (1048.576)			
21 PLC ±	52428.800 (2097.152)			
22 PLC ±	104857.600 (4194.304)			
23 PLC ±	209715.200 (8388.608)			
24 PLC ±	419430.400 (16777.216)			
25 PLC ±	838860.800 (33554.432)			
26 PLC ±	1677721.600 (67108.864)			
27 PLC ±	3355443.200 (134217.728)			
28 PLC ±	6710886.400 (268435.456)			
29 PLC ±	13421772.800 (536870.912)			
30 PLC ±	26843545.600 (1073741.824)			

NAME: 12 WAY RECEPTACLE, STANDARD SEAL EXTRA THIN SEAL, SHORT AND LONG CAP, DT SERIES
 SIZE: 4FU8 C=DT04-12PX-XXXX

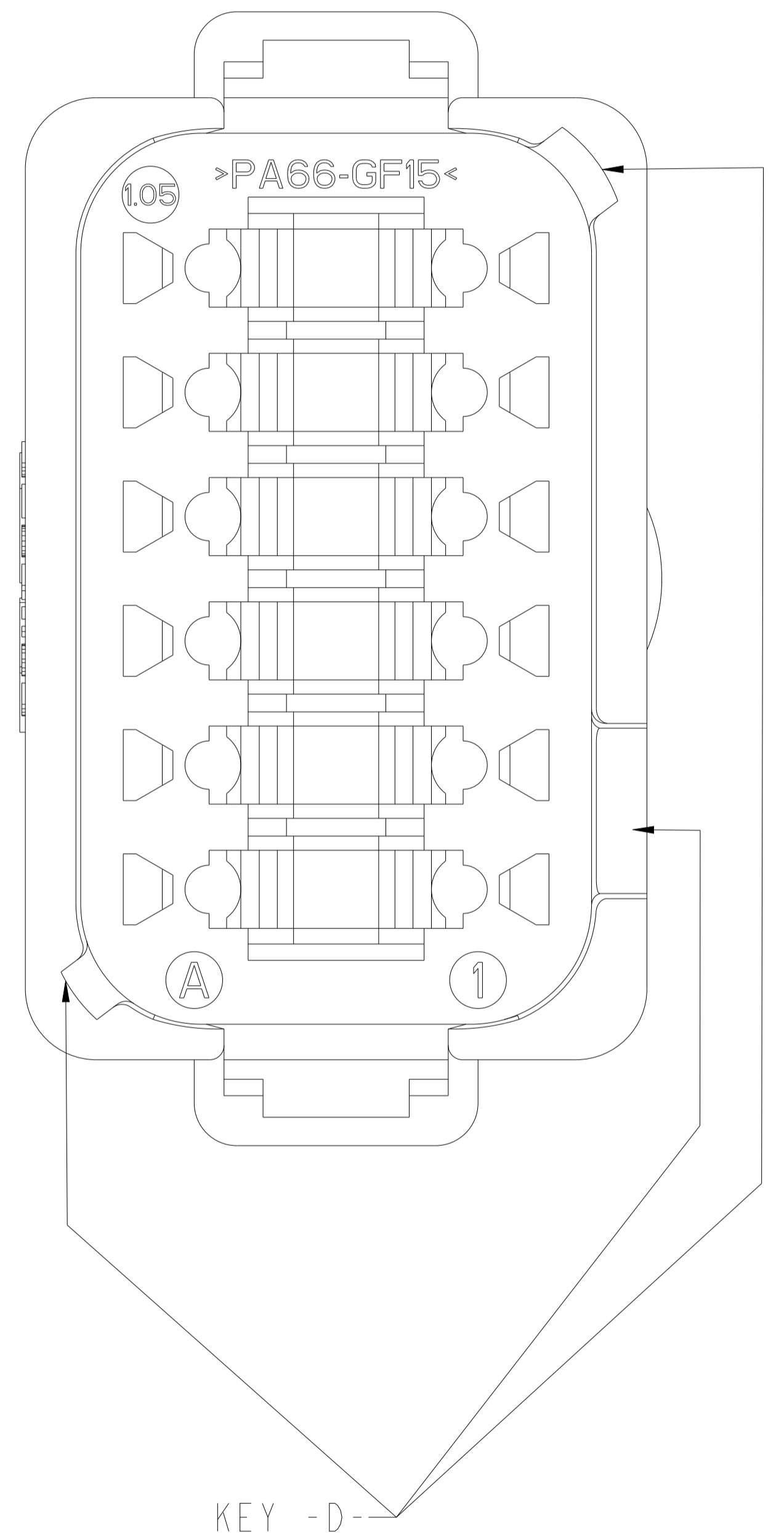
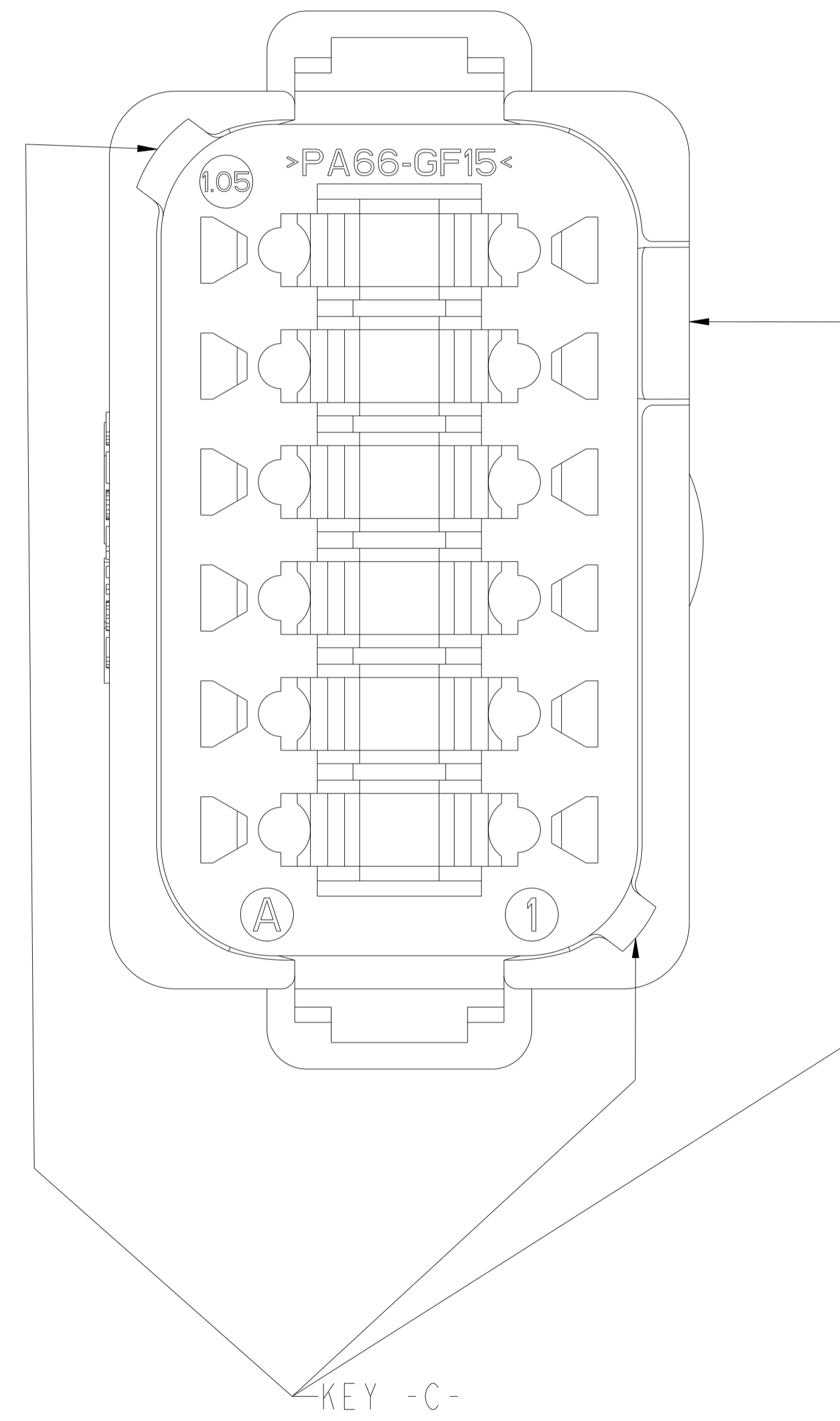
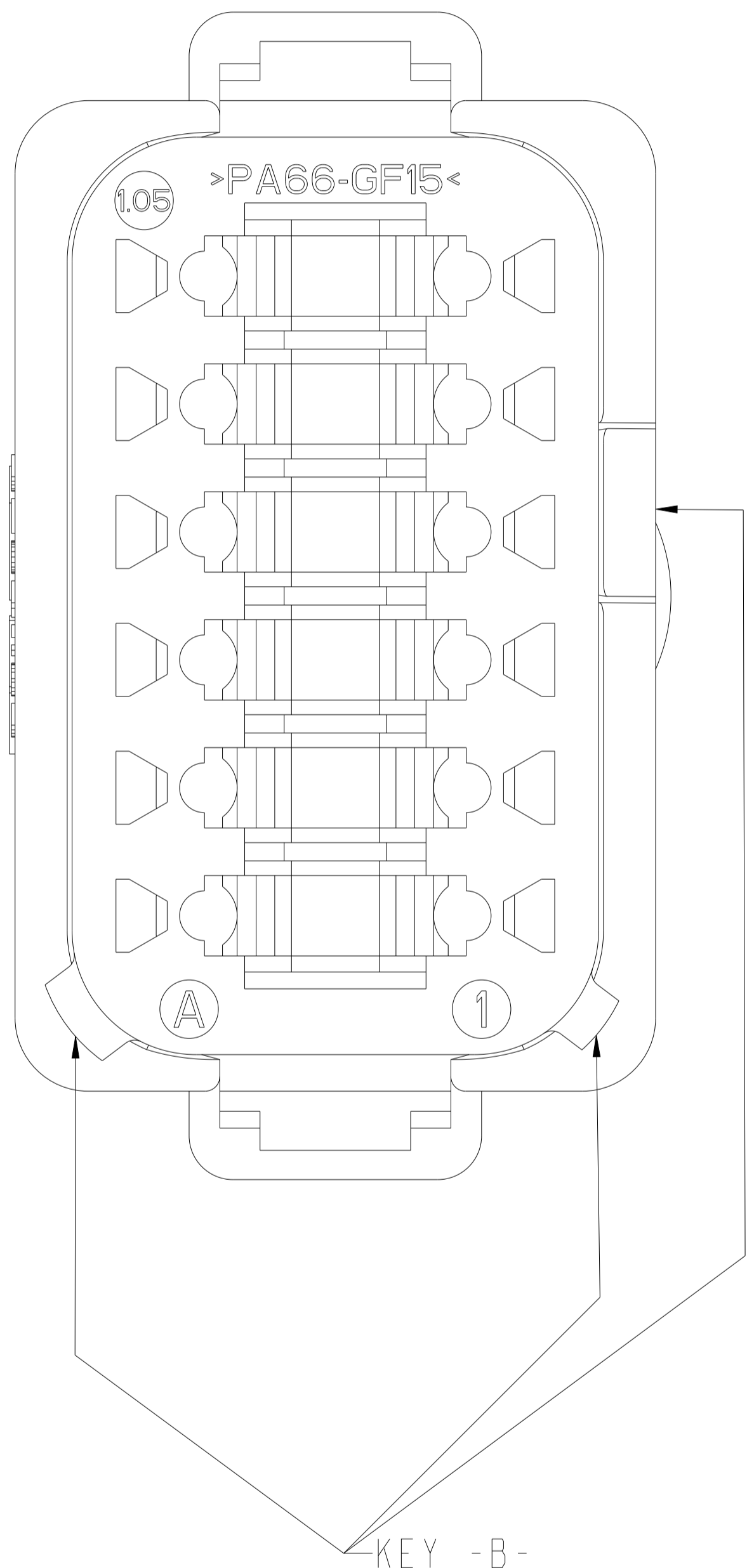
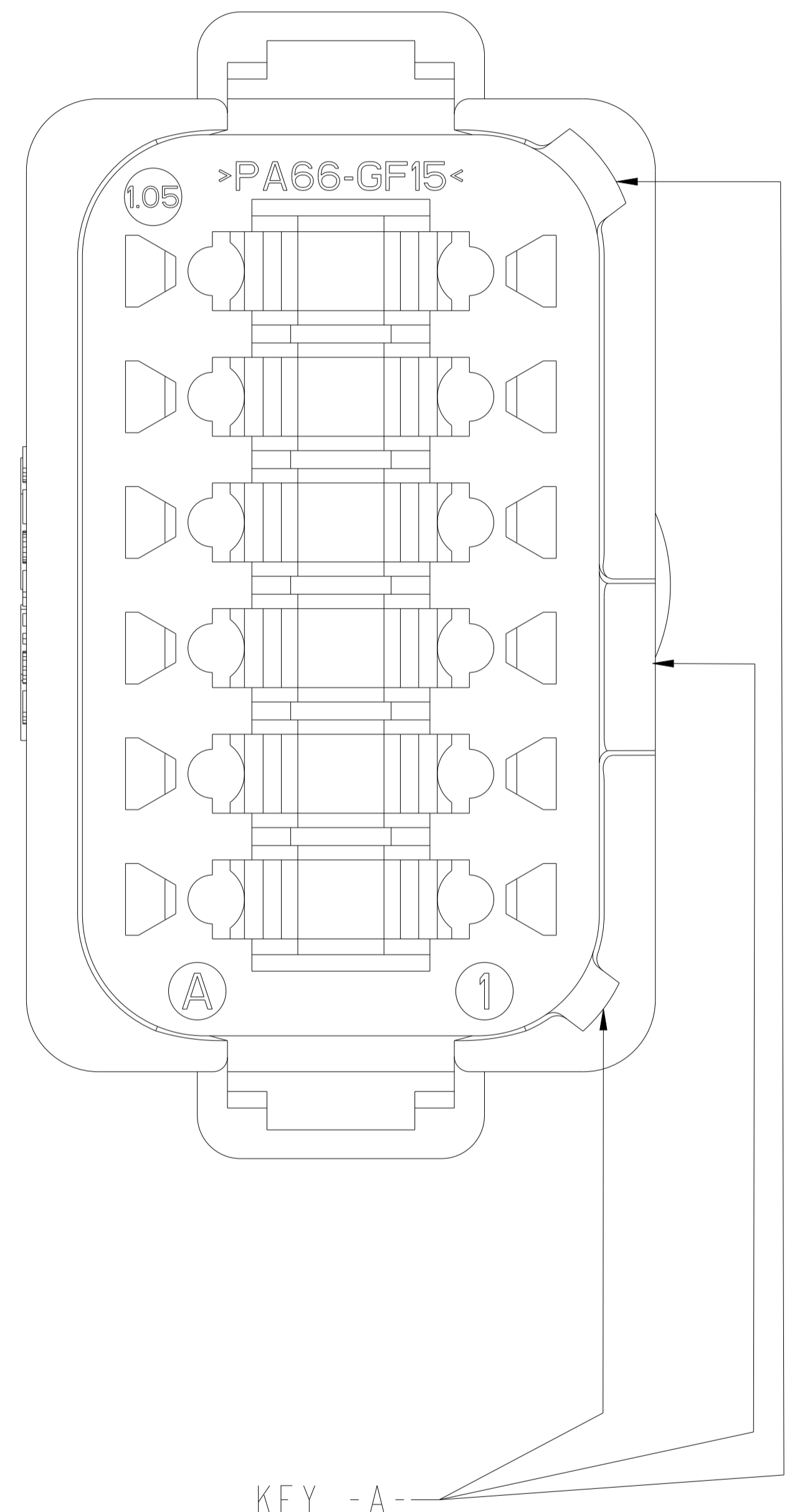
REVISIONS				
P	LTN	DESCRIPTION	DATE	APVD
-		SEE SHEET 1	-	-

DT04-12PA-XXXX
 KEY -A-
 COLOR: GRAY
 SEE PN TABLE FOR BLACK PN

DT04-12PB-XXXX
 KEY -B-
 COLOR: BLACK

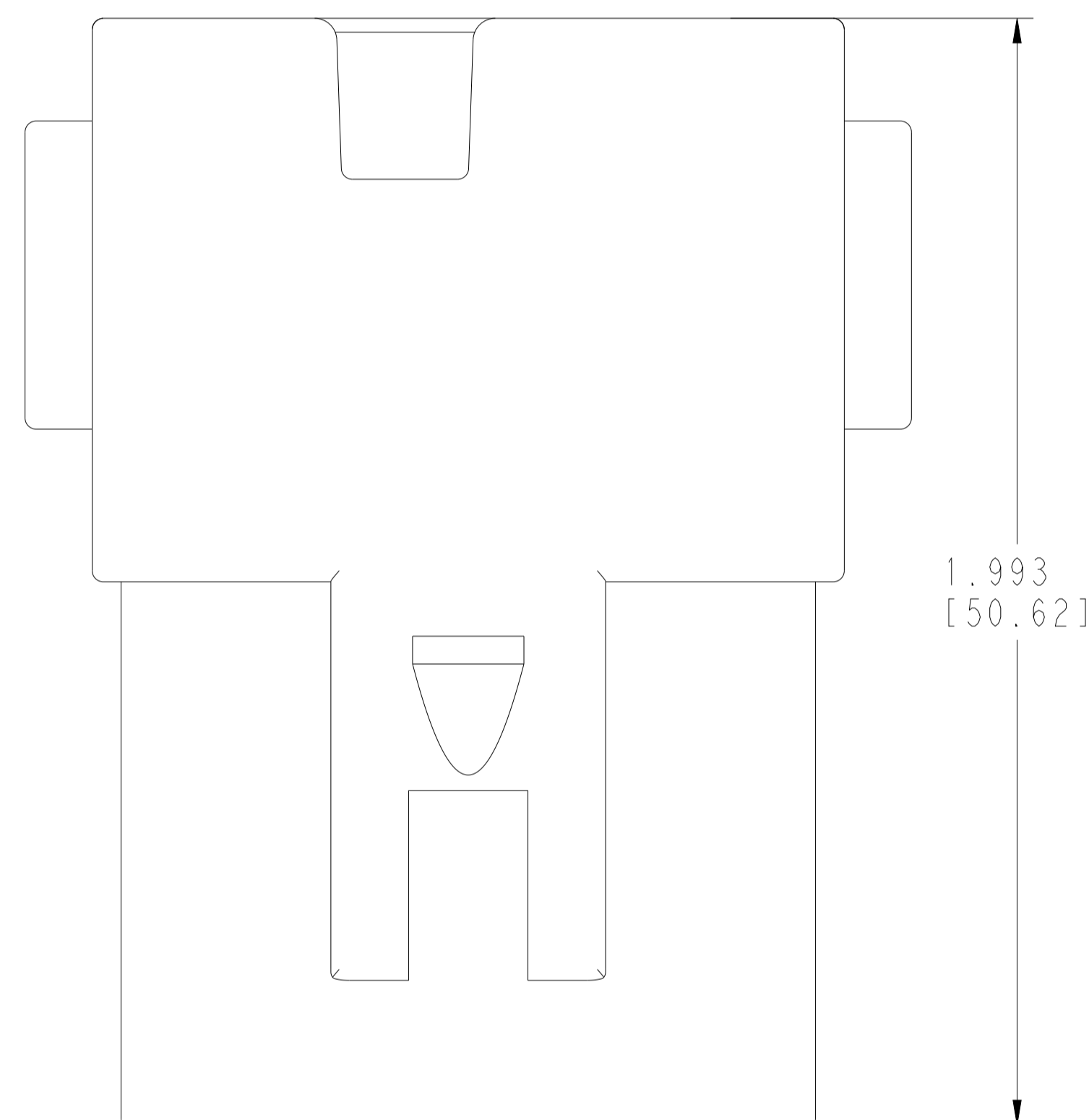
DT04-12PC-XXXX
 KEY -C-
 COLOR: GREEN

DT04-12PD-XXXX
 KEY -D-
 COLOR: BROWN

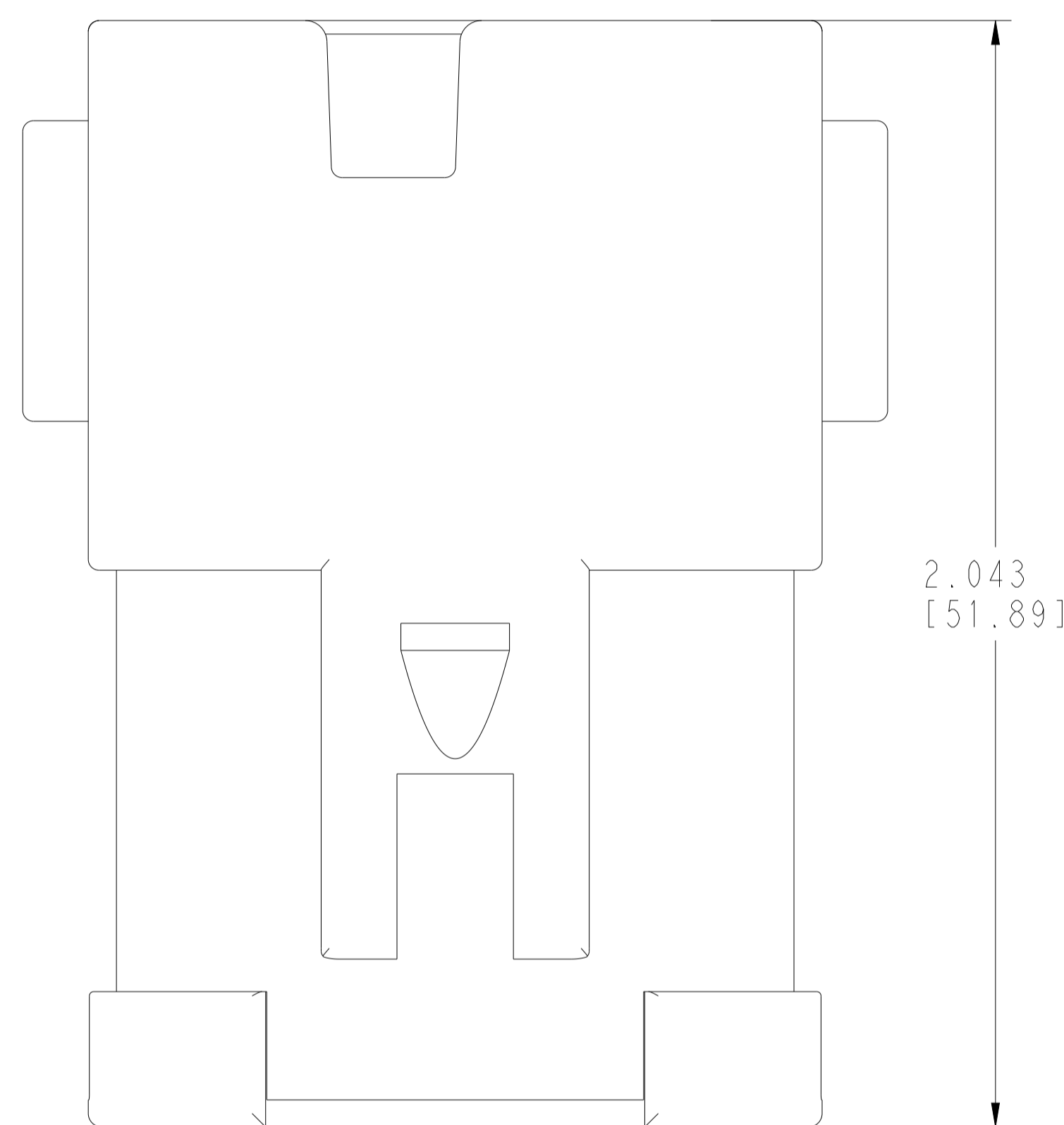


THIS DRAWING IS A CONTROLLED DOCUMENT.		DWN: A. POLO 22DEC2021 CHK: R. MESSENGER 22DEC2021 APVD: I. GRANICHAROVA 22DEC2021	
DIMENSIONS: IN [mm]	TOLERANCES UNLESS OTHERWISE SPECIFIED: 0 PLC ± 1 PLC ± 2 PLC ± 3 PLC ±0.25 (0.64) 4 PLC ± ANGLES ±0°30'0" FINISH	NAME: 12 WAY RECEPTACLE, STANDARD SEAL EXTRA THIN SEAL, SHORT AND LONG CAP, DT SERIES PRODUCT SPEC: 108-151009 APPLICATION SPEC: 114-151009 WEIGHT:	
MATERIAL: 3		CUSTOMER DRAWING	SCALE: 5:2 SHEET: 2 OF 3 REV: A5

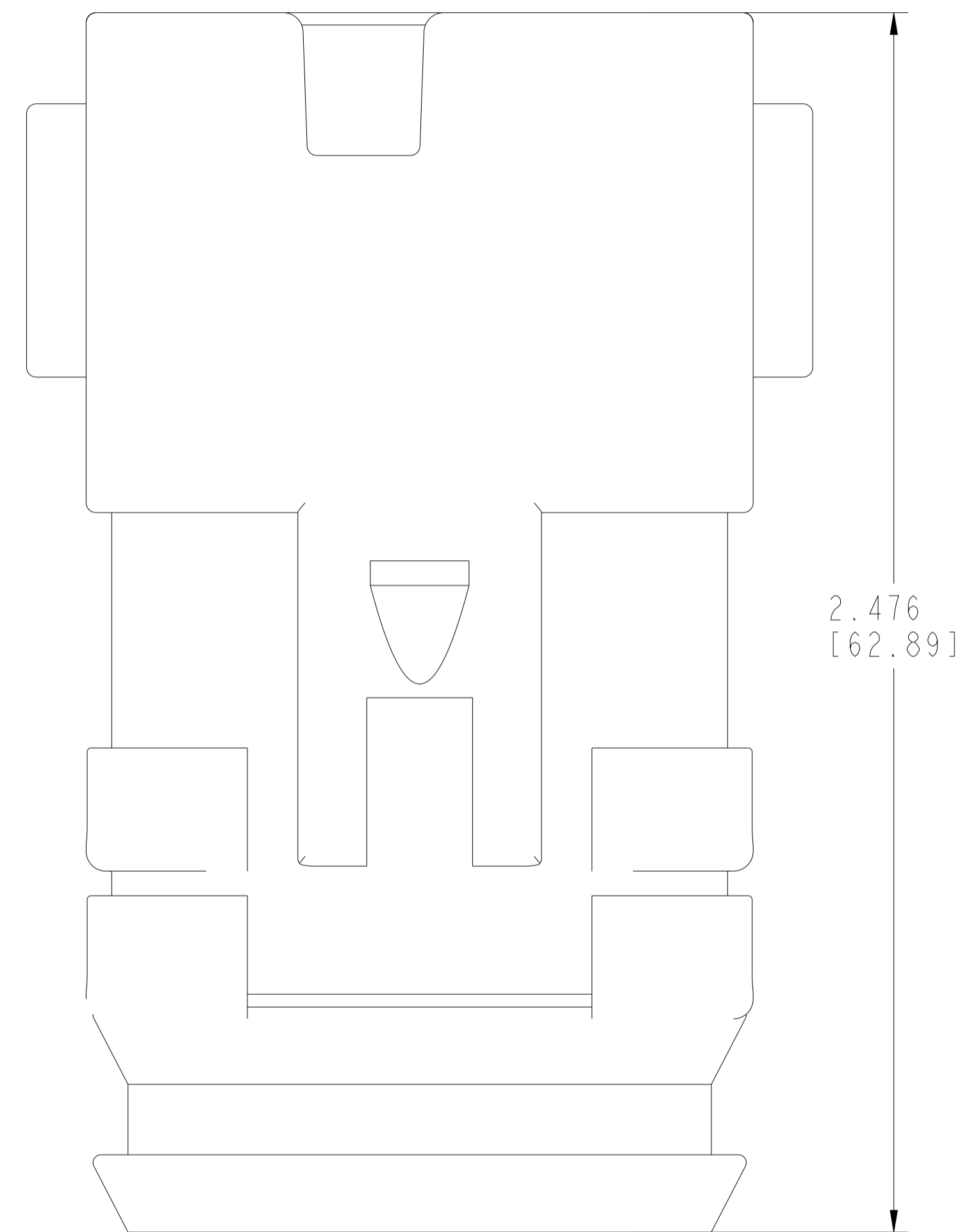
REVISIONS				
P	LTN	DESCRIPTION	DATE	APVD
-		SEE SHEET 1	-	-



ENHANCED KEY
NO CAP



ENHANCED KEY
SHORT CAP



ENHANCED KEY
LONG CAP

THIS DRAWING IS A CONTROLLED DOCUMENT.		DWN A. POLO 22DEC2021	
		CHK R. MESSENGER 22DEC2021	
DIMENSIONS: IN [mm]	TOLERANCES UNLESS OTHERWISE SPECIFIED:	APVD J. GRANICHAROVA 22DEC2021	NAME 12 WAY RECEPTACLE, STANDARD SEAL EXTRA THIN SEAL, SHORT AND LONG CAP, DT SERIES
	0 PLC ±	PRODUCT SPEC 108-151009	SIZE A 4AFU8
	1 PLC ±	APPLICATION SPEC 114-151009	CAGE CODE C=DT04-12PX-XXXX
	2 PLC ±		DRAWING NO RESTRICTED TO
	3 PLC ± 0.25 (0.64)		SCALE 5:2
	4 PLC ±		SHEET 3 OF 3
	ANGLES ±0° 30' 0"	WEIGHT	REV A5
MATERIAL 	FINISH	CUSTOMER DRAWING	