

4

3

2

1

THIS DRAWING IS UNPUBLISHED.

RELEASED FOR PUBLICATION

--

© COPYRIGHT - By -

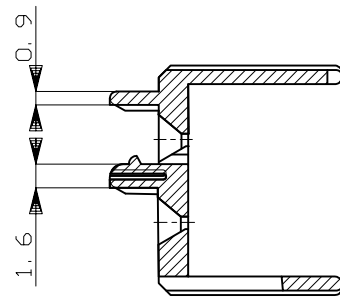
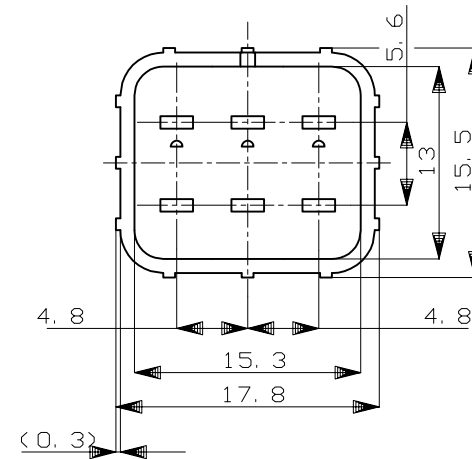
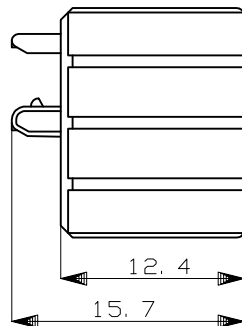
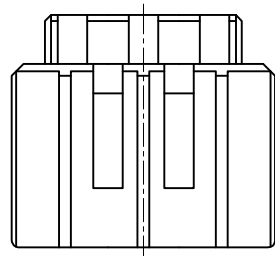
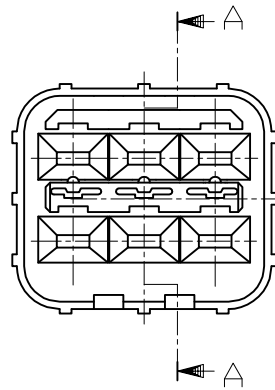
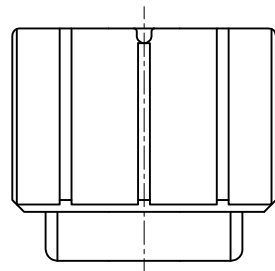
ALL RIGHTS RESERVED.

LOC

DIST

REVISIONS

P	LTR	DESCRIPTION	DATE	DWN	APVD
	B1	REVISED	27JAN2015	TS	KB



SECT 断面 A-A

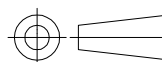
1. 本品は、キャップハウジング型番174264に装着される。

1. TO BE MATED WITH CAP HOUSING (PN 174264)

HB	自然色 (NATURAL)	1-174265-1
V-2	黄 (YELLOW)	174265-7
使用材料難燃グレード (FLAMMABILITY OF MATERIAL)	色 (COLOR)	型番 (PART NUMBER)

THIS DRAWING IS A CONTROLLED DOCUMENT.

DIMENSIONS: mm



TOLERANCES UNLESS OTHERWISE SPECIFIED:

0 PLC	±
1 PLC	±
2 PLC	±
3 PLC	±
4 PLC	±
ANGLES	±

MATERIAL PBT

FINISH -

GENERAL TOLERANCE

0 < * ≤ 10	: ±0.2
10 < * ≤ 30	: ±0.25
30 < * ≤ 100	: ±0.3
ANGLES	: ±3°

DWN T.SAGAWA 5/16'89

CHK Y.MATSUSAKA 5/26'89

APVD M.NOGUCHI 5/31'89

PRODUCT SPEC 108-5262

APPLICATION SPEC -

WEIGHT -

CUSTOMER DRAWING



NAME 6P. ECONOSEAL J-MARKII+ CONNECTOR DOUBLE LOCK PLATE FOR CAP HOUSING

SIZE A3	CAGE CODE 00779	DRAWING NO C=174265	RESTRICTED TO -
---------	-----------------	---------------------	-----------------

SCALE 5:1 SHEET 1 of 1 REV B1